



## FISHERMAN'S HAS THE PERFECT GIFT & GREAT PRICES!

**CURADO® D**  
**SHIMANO** CASTING REELS



- Model #CU200DHSV
- Model #CU201DHSV

Reg. \$199.99  
**AFTER \$50 MFG. MAIL-IN REBATE**  
**\$149.99** Each

- Model #CU300DHSV
- Model #CU301DHSV

Reg. \$249.99  
**AFTER \$50 MFG. MAIL-IN REBATE**  
**\$199.99** Each

**LMS334c iGPS COLOR FISHFINDER/GPS COMBO**  
**LOWRANCE®**



- 480 X 480 Pixels
- 5" Color Display
- 2400 Watts
- 900 ft. Depth Cap.
- Internal 12 Parallel Ch.
- + WAAS
- 1000 Waypoints

**SAVE \$250**

**HOLIDAY**  
Reg. \$649.99  
**\$399.99** Each  
**SUPER SPECIAL**

**ULTI-MATE LAKE 6 1/2" FILLET KNIFE**

- Model #0226BKM-B
- Sheath Included
- Stainless Steel Blade

**BUCK KNIVES**



**HOLIDAY**  
Reg. \$16.99  
**\$7.99** Each  
**SUPER SPECIAL**

**FISHERMAN'S GIFT CARDS ARE A GREAT STOCKING STUFFER!**

**OUTBOARD MOTOR OIL**  
**QUICKSILVER®**  
MARINE PARTS AND ACCESSORIES



Gallon #92-458022Q

**LIMIT 12 PER CUSTOMER**

**HOLIDAY**  
Reg. \$19.99  
**\$15.97** Each  
**SUPER SPECIAL**

**C4 SERIES CASTING REELS**  
**Abu Garcia®**



- 6.3:1 Gear Ratio
- Right & Left Hand

- Model #5600C4
- Model #5601C4

Reg. \$84.99  
**\$72.88** Each

- Model #6600C4
- Model #6601C4

Reg. \$94.99  
**\$82.88** Each

**SALMON/STEELHEAD RODS**  
**NORTH RIVER**



**CHOOSE FROM 11 MODELS**

**CHOOSE FROM SPINNING & CASTING**

**SAVE \$30**

**HOLIDAY**  
Reg. To \$89.99  
**\$58.88** Each  
**SUPER SPECIAL**

**PORTABLE PROPANE HEATER BUDDY**  
**Mr. Heater**



- 4,000 - 9,000 BTUs
- Auto Low Oxygen Shut-Off
- Heats Up To 250 Sq. Ft.
- Safe For Indoor Use
- Model #MH9B

**HOLIDAY**  
Reg. \$79.99  
**\$68.88** Each  
**SUPER SPECIAL**

**D-SHOCK SPINNING COMBO**  
**Daiwa**



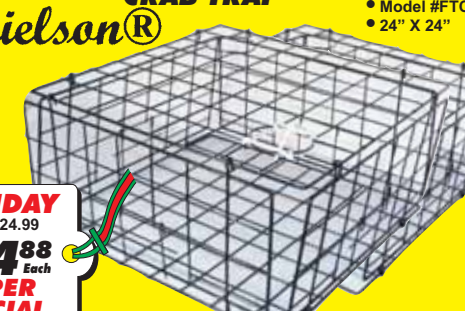
Selected Lengths:

- 5'6"
- 6'6"
- 7'

**CHOOSE FROM 3 LENGTHS**

**HOLIDAY**  
Reg. \$24.99  
**\$12.99** Each  
**SUPER SPECIAL**

**CRAB TRAP**  
**Danielson®**



- Model #FTC
- 24" X 24"

**HOLIDAY**  
Reg. \$24.99  
**\$14.88** Each  
**SUPER SPECIAL**

**SPECIAL EDITION CLASSIC FIXED BLADE HUNTING KNIFE**  
**LEUPOLD**  
AMERICA'S OPTICS AUTHORITY



- Model #62178
- Rosewood Handle
- 6" Fixed Blade
- Leather Sheath

**HOLIDAY**  
Reg. \$49.99  
**\$24.99** Each  
**SUPER SPECIAL**

**SAVE \$25**

**LIMITED QUANTITIES**

**BACKWATER 10 FT. PONTOON BOAT**



- Powder Coated Frame
- 6' 2-Piece Oars
- Brass Oar Locks
- Model #PPB5511S
- 120" X 55" Inflated
- 10' Pontoons
- Motor Mount
- 3-Position Folding Seat

**SAVE \$100**

**HOLIDAY**  
Reg. \$499.99  
**\$399.97** Each  
**SUPER SPECIAL**

**TEAM REALTREE PRO STAFF LASER 440 RANGEFINDER**  
**Nikon**



- Model #8353
- 1/2 Yard Accuracy
- Pocket Size
- Weight 7 oz.

**HOLIDAY**  
Reg. \$239.99  
**\$189.99** Each  
**SUPER SPECIAL**



# THE BITE IS ON AT FISHERMAN'S FOR THE BEST GIFTS @ GREAT PRICES!

## SWEEPFIRE-B SERIES SPINNING REELS

**CHOOSE FROM 2 MODELS**

**Daiwa**  
COMMITTED TO TOTAL QUALITY  
Advancing The Sport Of Fishing

- Model #SW2000-B
- Model #SW2500-B
- 1 Ball Bearing
- 5.3:1 Gear Ratio

**HOLIDAY**  
Reg. \$24.99  
**\$12<sup>88</sup> Each**  
**SUPER SPECIAL**

## SPINNING REELS

**AGILITY™**

**Shakespeare**  
SINCE 1897

**CHOOSE FROM 4 MODELS**

**Models:**

- Model #6825X
- Model #6830X
- Model #6835X
- Model #6840X

**HOLIDAY**  
Reg. \$34.99  
**\$23<sup>88</sup> Each**  
**SUPER SPECIAL**

## BUZZ RAMSEY IM7 SALMON/STEELHEAD RODS

**Berkley**

**CHOOSE FROM SPINNING & CASTING**

**CHOOSE FROM 14 MODELS**

**HOLIDAY**  
Reg. \$74.99  
**\$58<sup>88</sup> Each**  
**SUPER SPECIAL**

## SALMON/STEELHEAD RODS

**XSTREAM**

**CHOOSE FROM SPINNING & CASTING**

**CHOOSE FROM 9 MODELS**

- Fuji Guides
- IM7 Graphite

**HOLIDAY**  
Reg. \$119.99  
**\$79<sup>99</sup> Each**  
**SUPER SPECIAL**

## INSPIRA SPINNING REELS

**okuma**

- Model #IA-15
- Model #IA-20
- 9 BB/ 1 RB
- 5.0:1 Gear Ratio

**CHOOSE FROM 2 MODELS**

**HOLIDAY**  
Reg. \$84.99  
**\$62<sup>99</sup> Each**  
**SUPER SPECIAL**

## OPUS SERIES SPINNING REELS

**CHOOSE FROM 2 MODELS**

- Model #OP5500
- Model #OP6000
- 1 BB/ 1 RB
- 3.4:1 Gear Ratio

**Daiwa**  
COMMITTED TO TOTAL QUALITY  
Advancing The Sport Of Fishing

**HOLIDAY**  
Reg. \$36.99  
**\$29<sup>99</sup> Each**  
**SUPER SPECIAL**

## GUIDE SELECT SALMON/STEELHEAD RODS

**okuma**

**CHOOSE FROM 10 MODELS**

**CHOOSE FROM SPINNING & CASTING**

**HOLIDAY**  
Reg. \$89.99  
**\$62<sup>88</sup> Each**  
**SUPER SPECIAL**

## ALL (IN-STOCK)

**Ugly Stik®**

**Shakespeare**  
SINCE 1897

**CHOOSE FROM SPINNING OR CASTING**

**CHOOSE FROM BOAT & BANK MODELS**

**Choose From:**

- Trout
- Walleye
- Tuna
- Steelhead
- Salmon
- Sturgeon
- Halibut

**20% OFF**  
Regular Price

## CASTING REEL

**TR**

**SHIMANO**

- 1 Ball Bearing
- Clicker
- 4.3:1 Gear Ratio
- Model #TR100G
- Model #TR200G

**HOLIDAY**  
Reg. \$69.99  
**\$59<sup>99</sup> Each**  
**SUPER SPECIAL**

## MEGAFORCE LOW PROFILE BAITCASTING REEL

**Daiwa**  
COMMITTED TO TOTAL QUALITY  
Advancing The Sport Of Fishing

- 5 BB /2 RB
- Twitchin' Bar
- 7.1:1 Gear Ratio
- Model #MF100TSH
- Model #MF100TSHL

**HOLIDAY**  
Reg. \$69.99  
**\$58<sup>88</sup> Each**  
**SUPER SPECIAL**

## FREE STANDING ROD RACK

**okuma**

- Model #RR-B1
- Holds 16 Rods
- Combines for 2-Sided Or Splits for 2-Flush Mount Wall Racks

Rods & Reels Pictured Are Not Included

**HOLIDAY**  
Reg. \$24.99  
**\$13<sup>99</sup> Each**  
**SUPER SPECIAL**

## FLY RODS

**NORTH RIVER**

- 5 Weight 9'
- 6 Weight 9'

**SAVE \$25**

**HOLIDAY**  
Reg. \$69.99  
**\$44<sup>88</sup> Each**  
**SUPER SPECIAL**

## MAINSTREAM FLY LINES

**TRIO**

**MainStream FRESHWATER**

- Double Taper Floating
- Weight Forward Floating

**HOLIDAY**  
Reg. \$34.99  
**\$26<sup>88</sup> Each**  
**SUPER SPECIAL**

## FLY REELS

**FLUEGER**  
QUALITY SINCE 1881

**Medalist®**

**Models:**

- #1594
- #1594 1/2
- #1595
- #1595 1/2

**HOLIDAY**  
Reg. \$29.99  
**\$24<sup>88</sup> Each**  
**SUPER SPECIAL**

## INTEGRITY LARGE ARBOR FLY REELS

**okuma**

**Models:**

- #17/8
- #15/6
- #10/11
- #18/9

Reg. \$74.99  
**\$54<sup>88</sup> Each**  
Reg. \$79.99  
**\$58<sup>88</sup> Each**

## CASCADE FLY COMBO

- Model #CS-903-5
- 9' Length
- 5 Weight
- 3 Piece Set

**okuma**

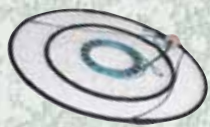
**SAVE \$30**

**HOLIDAY**  
Reg. \$79.99  
**\$49<sup>99</sup> Each**  
**SUPER SPECIAL**



# GIFT CARDS ARE WHAT EVERY ANGLER LOOKS FOR IN THEIR STOCKINGS!

## RUBBER WRAPPED CRAB GEAR



**30" RUBBER WRAPPED  
CRAB RING w/ROPE**  
Reg. \$34.99  
**\$26<sup>88</sup>**  
Each



**28" RUBBER WRAPPED  
CRAB POTS**  
Reg. \$79.99  
**\$66<sup>88</sup>**  
Each



**30" RUBBER WRAPPED  
CRAB POTS**  
Reg. \$89.99  
**\$74<sup>88</sup>**  
Each

## CLAM SHOVELS

**Danielson®**

- Item #269941
- 9" Blade
- 41" Handle



**HOLIDAY**  
Reg. \$22.99  
**\$16<sup>88</sup>**  
Each  
**SUPER  
SPECIAL**

## CRAB SNARE

**Danielson®**



Model #CSNR

**HOLIDAY**  
Reg. \$4.99  
**\$2<sup>88</sup>**  
Each  
**SUPER  
SPECIAL**

## CRAWDAD TRAP



**Danielson®**  
Model #MTWC

**HOLIDAY**  
Reg. \$11.99  
**\$7<sup>88</sup>**  
Each  
**SUPER  
SPECIAL**

## 50 lb. DIGITAL SCALE



**Berkley®**

Model #Fs50

**HOLIDAY**  
Reg. \$22.99  
**\$16<sup>88</sup>**  
Each  
**SUPER  
SPECIAL**

## DOWNRIGGERS



**Sooty®**

Model #1050DPR Reg. \$154.99  
**\$119<sup>99</sup>** Each

Model #1085DPR Reg. \$249.99  
**\$189<sup>99</sup>** Each

## ALL TACKLE BOXES (IN-STOCK) BY:



**PLANO**  
TACKLE SYSTEMS

All Tackle Pictured  
Is Not Included

**20% OFF**  
Regular Price

## STEELHEADER FISHING VEST

**Danielson®**

- Style #6717
- 28 Pockets
- Sizes: S - 3XL



**HOLIDAY**  
Reg. \$49.99  
**\$36<sup>88</sup>**  
Each  
**SUPER  
SPECIAL**

## TURBO MASTER FLOATS

- Models:
- TBM2-1
  - TBM3-1
  - TBM4-1



**thill**  
GOLD MEDAL

**HOLIDAY**  
Reg. To \$2.99  
**\$1<sup>99</sup>**  
Each  
**SUPER  
SPECIAL**

## MARABOU JIG Beau~Mac



- Model #SMJ
- 1/4 or 1/8 oz Size

CHOOSE FROM  
28 COLORS

**HOLIDAY**  
Reg. \$1.49  
**\$1<sup>19</sup>**  
Each  
**SUPER  
SPECIAL**

## KWIKFISH®



CHECK OUT  
OUR CUSTOM  
COLORS

**LUHR-JENSEN**  
"Where Goodies Live"

**HOLIDAY**  
Reg. \$4.29  
**\$3<sup>29</sup>**  
Each  
**SUPER  
SPECIAL**

Size #K-11X

## HOT SHOT®

**LUHR-JENSEN**  
"Where Goodies Live"



Reg. \$5.29  
Size #30 **\$3<sup>99</sup>** Each  
Reg. \$5.49  
Size #35 **\$4<sup>19</sup>** Each

## 1-SHOT SPOOLS



**HOLIDAY**  
Reg. \$18.99  
**\$14<sup>88</sup>**  
Each  
**SUPER  
SPECIAL**

- Smoke
- Hi-Vis Green
- Clear
- 6# - 30#

## 1-SHOT SPOOLS



CHOOSE FROM  
ULTRA GREEN  
OR CHAMELEON

Reg. \$8.99 To \$13.99

**MAXIMA** **\$3<sup>00</sup> OFF**  
AMERICA Regular Price

## PRO PACK HOOKS



Reg. \$9.99  
**NEEDLE POINT HOOKS \$7<sup>88</sup>** Each  
Reg. \$15.99  
**CUTTING POINT HOOKS \$12<sup>88</sup>** Each

## ALL NETS (IN-STOCK) BY:



**Beckman  
Net Co., Inc.**

**20% OFF**  
Regular Price



# FISHERMAN'S HAS OUTERWEAR FOR EVERYONE!

## HOODED FLEECE JACKET w/SHERPA LINING

Style #222SP



CHOOSE FROM  
BLACK, BLUE,  
& CHARCOAL

**HOLIDAY**  
Reg. \$29.99  
**\$19<sup>97</sup>**  
Each  
**SUPER  
SPECIAL**

## WATERPROOF 8-POCKET VEST w/FLEECE LINING

**TEN WEST**

Style# #96462

CHOOSE FROM  
NAVY & BLACK

**HOLIDAY**  
Reg. \$22.99  
**\$14<sup>97</sup>**  
Each  
**SUPER  
SPECIAL**

## PLAID FLEECE COAT w/HOOD & SHERPA LINING

**TEN WEST**

Style# #90712



**HOLIDAY**  
Reg. \$39.99  
**\$29<sup>99</sup>**  
Each  
**SUPER  
SPECIAL**

## ISOTONER COUDUROY SLIP ON



SIZES 8 TO 12

CHOOSE FROM  
BROWN, BLUE,  
MAROON & BLACK

**HOLIDAY**  
Reg. \$25.00  
**\$9<sup>97</sup>**  
Each  
**SUPER  
SPECIAL**

## COMMERCIAL GRADE RAIN WEAR (IN-STOCK) BY:

**GRUNDENS**



**20% OFF**  
Regular Price

## BI-LAMINATE RAIN SUIT

**DRI  
DUCKS**

- Model #DS1204
- Lightweight
- Breathable
- Windproof/Waterproof
- Sizes S - 2X

*Togg's*



CHOOSE FROM  
KHAKI OR FOREST  
GREEN

**HOLIDAY**  
Reg. \$19.99  
**\$12<sup>97</sup>**  
Each Set  
**SUPER  
SPECIAL**

## PVC KNEE BOOTS



**SERVUS**  
Servus sets the standard

**HOLIDAY**  
Reg. \$19.99  
**\$12<sup>97</sup>**  
Each  
**SUPER  
SPECIAL**

- Model #18822
- 16"
- FOOT FORM Contoured Insole
- Sizes 4 - 14

## INSULATED KNEE BOOTS



**SERVUS**  
Servus sets the standard

**HOLIDAY**  
Reg. \$54.99  
**\$39<sup>99</sup>**  
Each  
**SUPER  
SPECIAL**

- Model #T350
- 17" Tall
- Trac Tread Outsole
- FOOT FORM Insole
- Sizes 6-14

## IMPULSE FAMILY LIFE VESTS U.S.C.G. APPROVED

*America's Cup*  
By American Outdoor Living Inc.

Style # 505-1



CHOOSE FROM  
2 COLOR COMBINATIONS

**HOLIDAY**  
Reg. \$34.99  
**\$22<sup>97</sup>**  
Each  
**SUPER  
SPECIAL**

## ALL TERRAIN FLEECE JACKET



**MOSSY OAK**  
APPAREL

- Style #0289M21
- Full Front Zipper
- Stand-Up Collar
- Sizes: M - 3X

**HOLIDAY**  
Reg. \$49.99  
**\$29<sup>99</sup>**  
Each  
**SUPER  
SPECIAL**

## BONDED HYPERFLEECE WATERPROOF BLANKET



*Gamehide*

- Item #WPB
- 48" X 58"
- 100% Washable
- Windproof

CHOOSE FROM  
REALTREE, MOB  
& MORE!

**HOLIDAY**  
Reg. \$44.99  
**\$34<sup>99</sup>**  
Each  
**SUPER  
SPECIAL**

## ALL OUTERWEAR (IN-STOCK) BY:

**RIVERS WEST**



**20% OFF**  
Regular Price



# FISHERMAN'S IS THE FIRST STOP FOR GIFTS FOR HUNTING IN THE NW!

## MODEL 34 PANTHER AIR RIFLE w/4X32 COMPACT SCOPE



- Cal. .177 1000 fps
- Black Synthetic Stock
- TruGlo Fiber Optic Sights
- Adjustable Trigger
- Auto Safety
- Rifled Steel Barrel

**HOLIDAY**  
Reg. \$219.99  
**\$179.99** Each  
**SUPER SPECIAL**

SAVE \$40

## COPPER JACKET .22 LR AMMO



**LIMITED TO STOCK-ON-HAND NO RAINCHECKS**

**FEDERAL AMMUNITION**

**HOLIDAY**  
Reg. \$1.39  
**99¢** Each  
**SUPER SPECIAL**

## EXCURSION SERIES BINOCULARS



**Bushnell**

10 X 32  
Model #241032

8 X 32  
Model #240832

SAVE \$35

**HOLIDAY**  
Reg. To \$159.99  
**\$124.99** Each  
**SUPER SPECIAL**

YOUR CHOICE 2 MODELS TO CHOOSE FROM

## DEAD SHOT SHOOTING REST FRONT & REAR COMBO PKG.



**Caldwell Shooting Supplies**

**HOLIDAY**  
Reg. \$39.99  
**\$19.99** Each  
**SUPER SPECIAL**

Model #939-333

## .177 CALIBER PELLET RIFLE w/4X32 RIFLE SCOPE



**Quest**

- Model #C1K77X
- Hardwood Stock
- Rifled Break Barrel
- Up To 1000 fps
- Single Shot

**Crosman**

**HOLIDAY**  
Reg. \$129.99  
**\$99.99** Each  
**SUPER SPECIAL**

## HANDGUN AMMO



**FEDERAL AMMUNITION**

**LIMITED TO (STOCK-ON-HAND) NO RAINCHECKS**

9MM (AE9AP/AE9DP) Reg. \$10.99 **\$7.99** Each

40 S&W (AE40RI/AE40R3) Reg. \$12.99 **\$9.99** Each

45ACP (AE45A) Reg. \$15.99 **\$12.99** Each

357 Mag (AE357A) Reg. \$18.99 **\$14.99** Each

## ACTION EXTREME ATB 12X50 BINOCULARS



- Model #7246
- Wide Angle Binoculars
- 100% Waterproof
- 100% Fogproof
- 100% Shockproof
- Long Eye Relief
- Includes Neck Strap & Case

**Nikon**

**HOLIDAY**  
Reg. \$189.99  
**\$159.99** Each  
**SUPER SPECIAL**

## AIRGUN & RIMFIRE RESETTING TARGETS



**Caldwell Shooting Supplies**

**HOLIDAY**  
Reg. \$24.99  
**\$14.99** Each  
**SUPER SPECIAL**

YOUR CHOICE 2 MODELS TO CHOOSE FROM

- Model #902-365
- Model #820-585

# CHECK OUT OUR HUGE CLOSE-OUT FIREARM SALE!

## DOUBLE SCOPED RIFLE OR SHOTGUN CASE



Scopes & Rifles Not Included

**FREE!**  
WITH THE PURCHASE OF CASE #10588 GET A SCOPED PISTOL CASE MODEL #10137

**HOLIDAY**  
Combined Value Reg. \$37.98  
**\$21.99** Each  
**SUPER SPECIAL**

- Model #10588
- Padlock Lockable

## DUAL COLOR DOT SCOPE SIGHT



**TRUGLO**

- Model #TG8030DB
- Dual Color Dot Scope Sight
- Red & Green Reticle
- 30 MM Diameter Tube
- Black w/Flip-Up Lens Caps

**HOLIDAY**  
Reg. \$69.99  
**\$44.99** Each  
**SUPER SPECIAL**

## LASER YARDAGEPRO



- Model #20-1916
- Pocket Size 4.2 X 3.6 X 1.9 Inches
- 4X Magnification
- Single Button Operation
- Water Resistant
- FOV: 320 ft. @ 1000 Yds.

**Bushnell**

SAVE \$30

**HOLIDAY**  
Reg. \$169.99  
**\$139.99** Each  
**SUPER SPECIAL**

## 32 PIECE UNIVERSAL WOOD GUN CLEANING BOX



**Outers**

- Model #70080
- 3 Solid Brass Rods For .17 Cal.
- 3 Solid Brass Rods For Other Sizes
- 9 Bronze Brushes
- 5 Absorbent Mops
- 2 Patch Loops
- 6 Cleaning Jags
- 2 Adapters For Rifles, Pistols, & Shotguns
- 50 Cleaning Patches

**HOLIDAY**  
Reg. \$24.99  
**\$14.99** Each  
**SUPER SPECIAL**

## CANYON HYDRATION BACKPACK



- Model #22-11004
- 1,420 cu. in. Cargo Volume
- 100 oz. Reservoir Size

**GERBER**

**HOLIDAY**  
Reg. \$69.99  
**\$44.99** Each  
**SUPER SPECIAL**

## ALUMINUM HARD SIDED DOUBLE PISTOL CASE



- Model #WGS7702
- 16 1/2" X 9" X 4 1/2"
- Airline Approved
- (2) Combination Locks

**WINCHESTER**

**HOLIDAY**  
Reg. \$49.99  
**\$34.99** Each  
**SUPER SPECIAL**

## BORE SNAKE GUN CLEANING KIT



**HOPPE'S**

**ALL CALIBERS ON SALE**

- Cleans Gun Bore In 10 Seconds
- Cleans From Bore w/o Disassembling

**HOLIDAY**  
Reg. To \$18.99  
**\$9.99** Each  
**SUPER SPECIAL**

Rifle & Scope Not Included

## ALUMINUM HARD SIDED DOUBLE RIFLE CASE



- Model #WGS7708
- 52 1/2" X 13 1/2" X 4 1/2"
- Airline Approved

**WINCHESTER**

**HOLIDAY**  
Reg. \$119.99  
**\$69.99** Each  
**SUPER SPECIAL**



# FISHERMAN'S HAS THE OUTDOOR GIFT FOR THE HOLIDAYS!

## GPSMAP 60CSx ELECTRONIC COMPASS & BAROMETRIC ALTIMETER

**GARMIN**

- Model #GPSMAP 60CSx
- 160 X 240 Pixels
- 1000 Waypoints



WITH THE PURCHASE  
OF A GPSMAP 60CSx  
GET A \$50 FISHERMAN'S  
GIFT CARD



**HOLIDAY**  
FISHERMAN'S  
LOW PRICE  
**\$449<sup>99</sup>**  
Each  
**SUPER  
SPECIAL**

## RINO 530Cx GPS, w/2-WAY RADIO ELECTRONIC COMPASS & BAROMETRIC ALTIMETER

**GARMIN**

- Model #RINO 530Cx
- 176 X 220 Pixels
- 500 Waypoints
- Up To 2 Miles FRS
- Up To 14 Miles GMRS
- NOAA Weather Radio



WITH THE PURCHASE  
OF A RINO 530Cx  
GET A \$50 FISHERMAN'S  
GIFT CARD



**HOLIDAY**  
FISHERMAN'S  
LOW PRICE  
**\$499<sup>99</sup>**  
Each  
**SUPER  
SPECIAL**

## FISHFINDER 535

**HUMMINBIRD**

- 800 ft. Depth Cap.
- Optional Speed
- Temp. Included
- 7" X 7" Size
- 200 kHz Transducer
- 2000 Watts
- 320 X 320 Pixels



**HOLIDAY**  
Reg. \$159.99  
**\$139<sup>99</sup>**  
Each  
**SUPER  
SPECIAL**

## FISHFINDER 525

**HUMMINBIRD**

- 800 ft. Depth Cap.
- 5" X 5" Size
- 200 kHz Transducer
- 1600 Watts
- 240 X 240 Pixels



**HOLIDAY**  
Reg. \$129.99  
**\$118<sup>99</sup>**  
Each  
**SUPER  
SPECIAL**

## LMS 525C DF FISHFINDER/GPS COMBO LOWRANCE

- 5" Display
- 480 X 480 Pixels
- 16 Bit Color Display
- 2500' Depth Cap.
- 4000 Watts
- 50/200 kHz Transducer
- 12 Parallel Ch. + WAAS
- 1000 Waypoints



**FREE!**  
WITH THE PURCHASE  
OF A LMS 525C DF  
GET A NauticPath Card  
A \$99 VALUE!

**HOLIDAY**  
FISHERMAN'S  
LOW PRICE  
**\$699<sup>99</sup>**  
Each  
**SUPER  
SPECIAL**

## TWO MANTLE PROPANE LANTERN w/HARD CASE

Model #5155B722



**HOLIDAY**  
Reg. \$34.99  
**\$26<sup>97</sup>**  
Each  
**SUPER  
SPECIAL**

## DIRECTORS CHAIR w/TABLE



Model #MAL-001



**HOLIDAY**  
Reg. \$36.99  
**\$29<sup>97</sup>**  
Each  
**SUPER  
SPECIAL**

## 2-BURNER PROPANE PerfectFlow InstantStart Stove

- Model #5466A750
- Windblock System
- 22,000 BTU



Propane  
Cylinder  
Not Included



**HOLIDAY**  
Reg. \$46.99  
**\$39<sup>97</sup>**  
Each  
**SUPER  
SPECIAL**

## DIGITAL ELECTRIC SMOKER VAULT



**HOLIDAY**  
Reg. \$189.99  
**\$179<sup>99</sup>**  
Each  
**SUPER  
SPECIAL**

- Model #ESQ30B
- 700" Smoking Cap.
- Thermostatically Controlled
- Automatic Shut-Off

## TAHOE EXPEDITION 3X 3-BURNER PROPANE STOVE

**CAMP CHEF**  
The Way to Cook Outdoors®



- Model #TB90-LW
- 3-Sided Windscreen
- 2-Easy Carry Side Handles

**HOLIDAY**  
Reg. \$189.99  
**\$159<sup>97</sup>**  
Each  
**SUPER  
SPECIAL**

## COLOSSUS 4-PERSON BOAT w/OARS

- Model #599A404
- 840 lb. Capacity
- 4 - Person
- 4 - Oars
- 4 - Oar Locks & Grab Line
- 110" X 48"
- NMMA Certified



**HOLIDAY**  
Reg. \$79.99  
**\$59<sup>97</sup>**  
Each  
**SUPER  
SPECIAL**

## 1 MILLION CANDLE POWER RECHARGEABLE SPOT LIGHT

**DORCY**



Model #41-1097

**HOLIDAY**  
Reg. \$19.99  
**\$12<sup>97</sup>**  
Each  
**SUPER  
SPECIAL**

## PRE-MADE BOAT DOCK LINES

CHOOSE FROM  
TWISTED OR BRAIDED  
NYLON



CHOOSE FROM  
15', 20' & 25' LENGTHS

**25% OFF**  
Regular Price

## OUTBOARD MOTOR BRACKET

Model #MB17100134



**FULTON**

**HOLIDAY**  
Reg. \$139.99  
**\$119<sup>97</sup>**  
Each  
**SUPER  
SPECIAL**

## CO<sub>2</sub> ULTRA INFLATABLE VEST

- Style #1131
- U.S.C.G. Approved

**STEARNS**



CHOOSE FROM  
BLUE OR ORANGE

**HOLIDAY**  
Reg. \$89.99  
**\$69<sup>97</sup>**  
Each  
**SUPER  
SPECIAL**



# FISHERMAN'S GIFT CARDS ARE THE PERFECT STOCKING STUFFER!

## OREGON YACHTSMAN CHART BOOK

- 17" X 22"
- Water Resistant Coated Paper



**GREAT GIFT IDEA**

**THESE BOOKS ARE EXTRA LARGE**

**HOLIDAY**  
Reg. \$34.99  
**\$28<sup>99</sup> Each**  
**SUPER SPECIAL**

## RINO 120 GPS & 2-WAY RADIO

**GARMIN**

- 12 Parallel Ch. +WAAS
- 500 Waypoints
- 8 MB Memory
- 1-14 FRS Ch. / 15-22 GMRS
- FRS 2 Mile Range
- GMRS 5 Mile Range



**SAVE \$30**

**HOLIDAY**  
Reg. \$249.99  
**\$219<sup>99</sup> Each**  
**SUPER SPECIAL**

## SPOT SATELLITE MESSENGER



- Built-In GPS Receiver
- Built-In Satellite Modem & Transmit Antenna
- Waterproof
- Floats
- OHSA Certified
- 1000 Waypoints
- Humidity & Salt Fog Rated



**A MUST TO KEEP YOUR HUNTER, HIKER, OR BOATER SAFE!**

**HOLIDAY**  
FISHERMAN'S LOW PRICE  
**\$149<sup>99</sup> Each**  
**SUPER SPECIAL**

## UNIDEN ATLANTIS 250 H/H VHF RADIO

**Uniden**

- All USA / International & Marine Channels
- Instant Ch. 16/9 Triple Watch
- N.O.A.A. Weather Ch.
- 1/5 Watt Switchable
- 3 Yr. Mfg. Warranty



**CHOOSE FROM BLACK OR GRAY MODELS**

**HOLIDAY**  
Reg. \$99.99  
**\$84<sup>99</sup> Each**  
**SUPER SPECIAL**

## QUEST MOUNTED VHF RADIO

**STANDARD HORIZON**

- NOAA Weather Alert
- All US, Canadian, & International Ch.
- Prog. Scan, Priority Scan, & Dual Watch
- 3 Yr. Waterproof Mfg. Warranty



**HOLIDAY**  
Reg. \$129.99  
**\$109<sup>99</sup> Each**  
**SUPER SPECIAL**

## DELUXE FOLDING CAMP CHAIRS

Model #BA



**CHOOSE FROM NAVY, BLACK & OLIVE**

**HOLIDAY**  
Reg. \$9.99  
**\$6<sup>97</sup> Each**  
**SUPER SPECIAL**

## BUDDY WALL MOUNT PROPANE HEATER



- Model #F255109
- 10,000 BTU
- Heats Up To 300 Sq. Ft.



**SAVE \$30**

**HOLIDAY**  
Reg. \$149.99  
**\$119<sup>97</sup> Each**  
**SUPER SPECIAL**

## QUEEN SIZE DOUBLE HIGH AIR BED w/WRAP 'N' ROLL CARRIER



- Model #5998-601
- 78" X 60" X 17"
- Wrap 'n' Roll Carrier Makes For Easy Transport



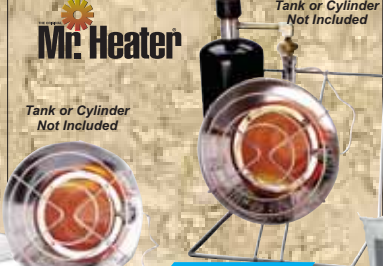
**HOLIDAY**  
Reg. \$46.99  
**\$39<sup>97</sup> Each**  
**SUPER SPECIAL**

## PROPANE HEATER OR HEATER/COOKER COMBO



Tank or Cylinder Not Included

Tank or Cylinder Not Included



**CHOOSE FROM 2 MODELS**

- Model #MH12C
- Model #MH12T
- 8,000-14,000 BTUs
- Adj. Heat Control

**HOLIDAY**  
Reg. \$49.99  
**\$39<sup>97</sup> Each**  
**SUPER SPECIAL**

## CLASSIC CASCADE CANVAS 12' X 9' CABIN TENT



- 5' Sidewalls
- 1 1/4" Alum. Poles
- Vinyl Covered Floors
- Zippered Door & Screen Door
- Carrying Bag



**HOLIDAY**  
Reg. \$449.99  
**\$399<sup>97</sup> Each**  
**SUPER SPECIAL**

## HelmsMate

### OUTBOARD EXTENSION HANDLE w/U-JOINT



Model #001



**HOLIDAY**  
Reg. \$44.99  
**\$36<sup>97</sup> Each**  
**SUPER SPECIAL**

## AnchorLift



IRONWOOD PACIFIC

Model #002



**HOLIDAY**  
Reg. \$17.99  
**\$12<sup>97</sup> Each**  
**SUPER SPECIAL**

## STARTING & DEEP CYCLE MARINE BATTERIES



**EXIDE**



**20% OFF**  
Regular Price

## AK-1 LIFE VESTS (4-PACK)

- Model #4207-19
- Adult Size 90 lbs. & Over

**Kent**



**INCLUDES STORAGE BAG**

**HOLIDAY**  
**\$26<sup>99</sup> Each**  
**SUPER SPECIAL**

## THOR SCOUT X RECHARGEABLE SPOTLIGHT 6.5 MILLION CANDLE POWER



GET OUT OF THE DARK

- Model #CYC-S6X
- 100 Watt Halogen Bulb
- Dual Recharge AC/DC



**HOLIDAY**  
Reg. \$29.99  
**\$19<sup>97</sup> Each**  
**SUPER SPECIAL**



### AMPHIB NEOPRENE CHEST WADERS



- Style #2713143
- Sizes: S - 2X
- 3.5 MM Neoprene
- Bib Style Suspenders
- Reinforced Knee Pads
- Forest Green Color

**HOLIDAY**  
Reg. \$79.99  
**\$59.97**  
Each  
**SUPER SPECIAL**

### SALMON TROLLING REELS



- Model #320 GTI
- Model #321 GTI
- 4.3:1 Gear Ratio
- 2 Ball Bearings

**HOLIDAY**  
Reg. \$82.99  
**\$64.88**  
Each  
**SUPER SPECIAL**

### THE V-BOAT

- Model #V-6000
- Supports Up To 300 lbs.
- 600 Denier Outer Shell
- 3 Pockets
- 2 Fly Patches
- Nylon Mesh Work Table



**HOLIDAY**  
Reg. \$119.99  
**\$78.88**  
Each  
**SUPER SPECIAL**

**SAVE \$41**

### STURGEON/HALIBUT & TUNA RODS



CHOOSE FROM  
6', 6'6", & 7'  
LENGTHS

- Fuji Guides
- IM7 Graphite
- Triangle Grip

**HOLIDAY**  
Reg. \$99.99  
**\$54.88**  
Each  
**SUPER SPECIAL**

### CONVECTOR LINE COUNTING REELS



- Models:
- CV20D
- CV20DLX
- CV30D
- CV30DLX

CHOOSE FROM  
4 MODELS

**HOLIDAY**  
Reg. \$69.99  
**\$54.88**  
Each  
**SUPER SPECIAL**

### ELECTRIC TROLLING MOTOR



Endura 30  
30# Thrust/  
30" Shaft

**HOLIDAY**  
Reg. \$109.99  
**\$98.88**  
Each  
**SUPER SPECIAL**

### A-SERIES COMMERCIAL RAIN WEAR



CHOOSE FROM  
BIBS OR JACKET  
w/HOOD

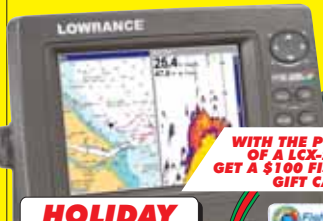
CHOOSE FROM  
ORANGE, NAVY,  
OR GREEN

- Bibs Style #1014
- Parka Style #1003
- PVC Exterior
- Nylon Interior
- Sizes XS - 4X

**HOLIDAY**  
Reg. \$29.99  
**\$19.97**  
Each  
**SUPER SPECIAL**

### LCX28C HD FISHFINDER/GPS CHARTPLOTTER COMBO LOWRANCE

- 7" 16-Bit Color Display
- 480 X 640 Pixels
- 50/200 kHz Transducer
- 8000 Watts
- 30 GB Hard Drive
- 12 Parallel Ch. + WAAS
- 1000 Waypoints



**HOLIDAY**  
FISHERMAN'S  
LOW PRICE  
**\$1249.99**  
Each  
**SUPER SPECIAL**

WITH THE PURCHASE  
OF A LCX-28C HD  
GET A \$100 FISHERMAN'S  
GIFT CARD

### THE LEAD SLED DFT



- Model #336-647
- Dual Frame Technology
- Reduces Recoil By 95%
- Extremely Fine Windage & Elevation Adjustments
- Cradle System Adj. To Firearm Length



LEAD SHOT BAGS  
NOT INCLUDED

**HOLIDAY**  
Reg. \$199.99  
**\$139.99**  
Each  
**SUPER SPECIAL**

### OREGON & WASHINGTON RIVER MAPS & FISHING GUIDES



- Best Seasons
- Species Available
- Fishing Methods
- Best Gear For Individual Rivers
- Boat Launches
- Parks
- Size Of Runs
- And MORE!

**HOLIDAY**  
Reg. \$25.00  
**\$16.88**  
Each  
**SUPER SPECIAL**

### CAMOUFLAGE CHAIR BLIND AMERISTEP QUALITY HUNTING

- Model #872
- Chair Attached To Blind
- No Assembly Required
- Large Front & Side Zippered Windows



Rifle Not  
Included

**HOLIDAY**  
Reg. \$99.99  
**\$64.99**  
Each  
**SUPER SPECIAL**

### 3/8" X 300' SOLID BRAID NYLON ANCHOR ROPE

Item #105114



**HOLIDAY**  
Reg. \$69.99  
**\$49.97**  
Each  
**SUPER SPECIAL**

### DOUBLE MANTLE PROPANE LANTERN



Authentic Adventure Gear®



- 6 Model #14202
- 600 Candlepower
- Base Holds 16.4 or 14.1 oz. Propane Cylinders

Propane Cylinder  
Not Included

**HOLIDAY**  
Reg. \$24.99  
**\$14.97**  
Each  
**SUPER SPECIAL**

### AIR DRYER



HELPS PREVENT  
MILDEW

Dry  
Wave



**HOLIDAY**  
Reg. \$54.99  
**\$39.97**  
Each  
**SUPER SPECIAL**

GREAT FOR  
RV'S & BOATS

- 13.5" X 10.5" X 4"
- 2 Yr. Mfg. Warranty
- Thermal Cut-Off Switch
- Model #015.1

### DELUXE FIELD & RANGE BENCH



**HOLIDAY**  
Reg. \$129.99  
**\$84.99**  
Each  
**SUPER SPECIAL**

- Model #40895
- Durable Solid Bench
- Portable
- Padded Roll Top
- Padded Seat
- Includes Front Shooting Yoke

**SAVE \$45**



**Fisherman's**  
Marine & Outdoor

www.fishermans-marine.com

## 2 GREAT STORE LOCATIONS

**PORTLAND/DELTA PARK** **OREGON CITY** Shopping Center  
1120 N. HAYDEN MEADOWS DR. 1900 SE McLoughlin Blvd.  
PHONE (503) 283-0044 PHONE (503) 557-3313

**STORE HOURS M-SAT. 9-8 SUN. 9-6**

Sale Limited To Stock On-Hand - CLOSED 12/25/07

**PRICES VALID 12/9/07 - 12/24/07**

